

# Milestones

June 2019



## St Andrew's Hospital Eastern Clinic Development, Adelaide

RCP's Adelaide team has recently been awarded the 2019 Australian Institute of Building South Australian Chapter Professional Excellence in Building Award in the project management category for their outstanding achievement on the St Andrew's Hospital eastern clinical development.

The \$50m, three storey development consisted of the construction of a new day surgery centre, 28 bed ward, staff gym and new three level basement car park; relocation of the central sterile services department (CSSD) to the former

procedure/angio suite area and the redevelopment of the existing service compound and plant building to accommodate a new tri-gen power plant.

RCP oversaw the development from concept design to completion. Although many challenges arose during this fast-track, complex building project undertaken in an operational hospital environment, the RCP team successfully mitigated client risk and guided the project team to deliver a world-class facility, on time and on budget.

## Military Vehicle Centre Of Excellence (MILVEHCOE), Qld

RCP has been engaged by the Queensland Government to provide specialist audit programming services for the Military Vehicle Centre of Excellence (MILVEHCOE) project in Ipswich, Queensland.

Rheinmetall Defence Australia was awarded the Department of Defence's \$5.2 billion LAND 400 Phase 2 project to supply the Australian Army with its next generation of 211 Boxer combat reconnaissance vehicles.

The MILVEHCOE project is currently under construction with the production warehouse, electronics facility and administration building's structural steel and reinforced concrete structure well underway.

Watpac has secured the managing contractor role to construct the facility, which is currently on programme for delivery in 2020.



## Inside this Issue

St Andrew's Hospital Eastern Clinic Development, Adelaide • Military Vehicle Centre of Excellence (MILVEHCOE), Qld • University of Otago Dental Facility, Auckland • Wynyard Place, Sydney • Gold Coast Airport Redevelopment - Project LIFT • Charles Fergusson Tower, Wellington • Oxford Central, Sydney • Mater Pimlico Redevelopment, Townsville • New National Director Appointments





## University of Otago Dental Facility, Auckland

The University of Otago Dental Facility is proposed to fulfil unmet clinical demand in the local community. It will increase both the breadth of clinical experience for undergraduate and postgraduate dental students and the national visibility of the university's Faculty of Dentistry.

The facility is a new build located adjacent to CMDHB's Manukau SuperClinic, comprising 32 dental chairs, a 15 workstation simulation environment and other supporting services. The landscape surrounding the facility promotes a sense of wellbeing and comfort for patients, staff and visitors, while the main entry bridge will take visitors through a canopy of trees once matured.

In-ground works are well underway and ground floor slab pours are commencing. Precast and structural steel are set to commence shortly along with works to the bridge. Completion is due February 2020 in time for Semester 1.

## Wynyard Place, Sydney

RCP, appointed by Rider Levett Bucknall (RLB), is providing specialist programming services for this landmark mixed-use development, currently under construction in the heart of Sydney's CBD.

The development comprises a 6 Star Green Star rated office tower, restoration of two heritage buildings and an upgrade of Wynyard's George Street entrance, public concourse and grand transit hall, integrating with the Sydney Light Rail project.

Wynyard Place will additionally offer dynamic shopping experiences, including high-end retail, fresh food providers, bars, restaurants and entertainment.

Completion of the development is projected for 2020.







## Gold Coast Airport Redevelopment - Project LIFT

Gold Coast Airport is undertaking the Southern Terminal Expansion (STE), which is the largest part of the \$370 million Project LIFT redevelopment – the biggest development project in the airport's history.

The STE will see a three-level terminal, including aerobridges, built to the south of the current facility. The new terminal will double the floor area of the existing terminal.

RCP has been appointed in the role of project director and specialist programmer to assist Queensland Airports Limited to manage the delivery of this significant upgrade. We are also working in a project management and superintendent capacity to assist in the delivery of a number of sub-project elements of the program of works.

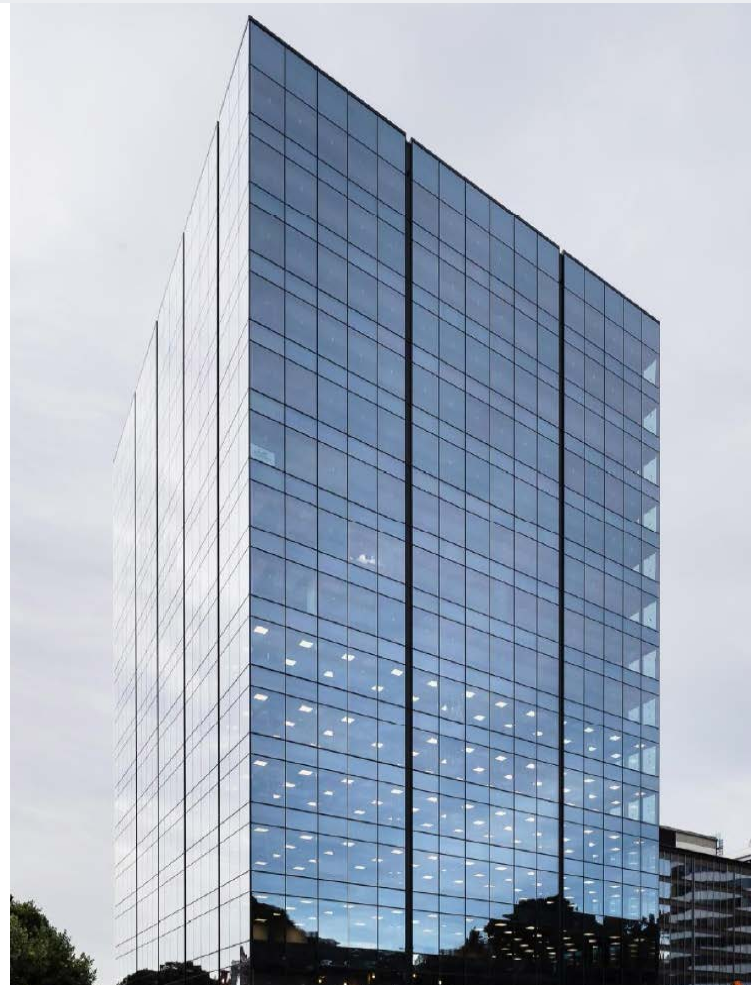
The upgraded facility is expected to open to passengers in 2021.

## Charles Fergusson Tower, Wellington

The rebuilt Charles Fergusson tower is part of the \$203 million Bowen Campus redevelopment in Wellington. It is the culmination of a major rebuild of the 1970s building named after Sir Charles Fergusson, Governor General of New Zealand from 1924 to 1930.

The building, owned by Precinct Properties New Zealand Limited, comprises a basement, lower ground, ground and 14 upper levels with the project extending the floor plate from 800m<sup>2</sup> to 900m<sup>2</sup>. The redevelopment includes a new façade, seismic strengthening to 100% of National Building Standard, new lifting systems and mechanical services, extensive asbestos removal and the creation of a new open plan interior fit out.

The building was completed by LT McGuinness on the due date of 19 December 2018, and The Ministry for Primary Industries occupied their new home in January 2019.





## Oxford Central, Sydney

April marked a significant milestone for the Oxford Central development in Epping, Sydney. A topping out ceremony hosted by Greaton and Ceerose was held to celebrate the completion of the structure for the project, with the customary topping out olive tree being placed on display.

RCP is currently providing superintendent services for the construction of this project, located at 30 – 42 Oxford Street, which comprises 252 luxurious residential apartments spread across two 17 storey towers and 625m<sup>2</sup> of retail on the ground level.

Well done to all involved, and now for the final push to complete this premium residential development.

## Mater Pimlico Redevelopment, Townsville

RCP's North Queensland Manager, Richard Foster, recently attended the milestone completion of the rooftop suspended slab for the Mater Pimlico Stage 1 building project in Townsville. The tower crane, "Craneosaurus", named after a school-based competition, is due to be dismantled shortly.

RCP was appointed by Mater Health Services North Queensland to provide project management and specialist programming services to complete the planning and documentation for the first stage of the major redevelopment of the hospital.



## New National Director Appointments





The RCP Board of Directors is delighted to announce the internal appointment of Mark Dibben, James Goodson and Greg Atkinson as RCP National Directors.

"These promotions recognise the outstanding project work and contributions each have made to the business to date and represent an exciting new chapter in the future growth of RCP in Australia." Russell Martoo, Managing Director.



Copyright © 2019  
Resource Co-ordination Partnership Pty Ltd (Trading as RCP)  
ACN 010 285 757 and its licensors. All rights reserved.  
QBCC Licence No. 1147410

 [www.linkedin.com/company/rcpaus](https://www.linkedin.com/company/rcpaus)  
 [www.instagram.com/rcp\\_aus](https://www.instagram.com/rcp_aus)

### AUSTRALIA

**Website** [www.rcp.net.au](http://www.rcp.net.au)  
**Email** [rcp@rcp.net.au](mailto:rcp@rcp.net.au)  
**Adelaide** Tel: +61 8 8205 7000  
**Brisbane** Tel: +61 7 3003 4100  
**Melbourne** Tel: +61 414 584 398  
**Sydney** Tel: +61 2 8234 8000  
**Townsville** Tel: +61 7 4721 0833

### NEW ZEALAND

**Website** [www.rcp.co.nz](http://www.rcp.co.nz)  
**Email** [rcp@rcp.co.nz](mailto:rcp@rcp.co.nz)  
**Auckland** Tel: +64 9 379 9250  
**Christchurch** Tel: +64 3 379 4701  
**Queenstown** Tel: +64 3 550 0950  
**Tauranga** Tel: +64 7 579 9250  
**Wellington** Tel: +64 4 473 1850