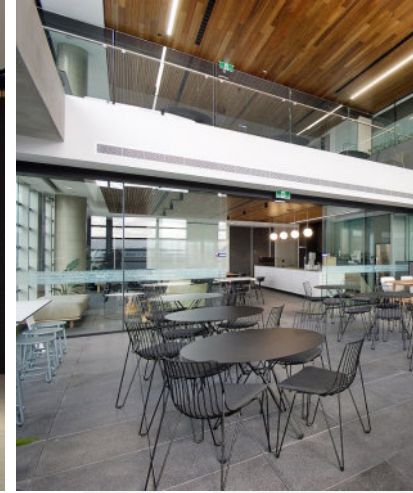


Milestones

June 2020



GPO Exchange, Adelaide

RCP was engaged by Charter Hall to perform project management, superintendent and specialist programming services for the landmark \$250m development, located in Adelaide's GPO and Victoria Square precinct. Practical completion of the GPO Exchange was achieved in October last year.

RCP's leadership proved invaluable in the successful delivery of the project, which is the largest to date undertaken by Charter Hall in South Australia. The development has achieved world leading sustainability credentials and was completed on time and under budget.

The project consisted of the construction of a new A Grade 22 storey office tower, retail outlet and a laneway precinct. Additionally, the iconic Telephone Exchange was refurbished as boutique office space.

The project team worked closely with heritage restoration specialists to successfully navigate the changes in use of the heritage building, carefully balancing the conflicting requirements of maintaining the heritage character of the site whilst creating a high-end technology-driven office building.

Artisan Residences & Culinary House, Melbourne

Artisan Residences and Culinary House apartments are located within Glenvill's cutting-edge YarraBend development in Melbourne.

The project is being delivered in a single stage consisting of 97 apartments, approximately 2,000sqm of food and beverage retail tenancy spaces on the ground floor, rooftop terrace, shared podium and 2 level basement.

RCP has been commissioned by Glenvill to provide superintendent services for the construction phase, which is projected to be completed in 2021.



Inside this Issue

GPO Exchange, Adelaide • Artisan Residences & Culinary House, Melbourne • David Jones, Sydney • Mater Pimlico Redevelopment Stage 1, Townsville • 360 Queen Street, Brisbane • Queensland Country Bank Stadium, Townsville • Haere-Roa UCSA Building, Christchurch, New Zealand

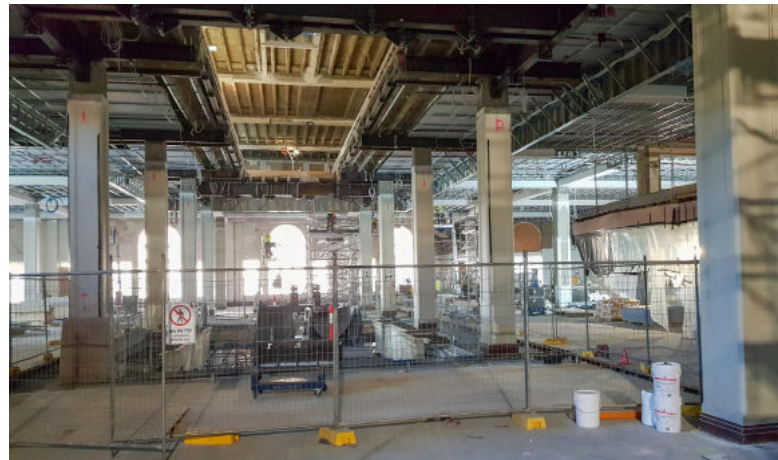


David Jones, Sydney

The final stage of the \$200m David Jones Elizabeth Street store redevelopment has now been completed. The milestone brings to successful completion RCP's rewarding and challenging role as project manager and specialist programmer on this iconic project. Associate Toby Schraer and Director Mark Dibben have been involved on the project since commencement of the concept design phase in November 2015, and Project Manager John Manahan has been responsible for the day to day project management oversight of the construction phase.

The project included the integration of the David Jones Market Street store into the Elizabeth Street store, bringing the 90+ year old building up to current code while maintaining and celebrating its rich history and heritage. The completed store now houses all men's, women's, children's, beauty, accessories, homewares and food departments across 35,000sqm of world class retail space.

The Elizabeth Street store provides a fresh, exciting perspective of the David Jones brand and resets the benchmark for department stores in the southern hemisphere.



Mater Pimlico Redevelopment Stage 1 Townsville

RCP is providing project management, superintendent and specialist programming services to complete the first stage of the major \$49m redevelopment of the Pimlico campus of the Mater Private Hospital Townsville.

The stage 1 redevelopment involved the construction of a 4-storey clinical services building. In a staged completion and handover programme, the new clinical services building, named the “Mercy Centre”, opened to the public on the 24th March 2020.

The building comprises new entry link-ways to the existing hospital building, a radiology tenancy, day surgery unit reception, pre-admissions clinic, stage 2 surgery recovery



suites, 4 new operating theatres, stage 1 surgery recovery suite, pre-operative patient preparation suite and extensive refurbishment of existing operating theatres and plant room.

The refurbishment of critical services has required implementation of high levels of planning and probity around forecasting disruption to services.

360 Queen Street, Brisbane

Charter Hall and Investa are in a joint venture to redevelop an amalgamated site at 360, 366, 370 and 380 Queen Street, Brisbane into a 50,000m² A-grade commercial office tower.

The 360 Queen Street project is well underway with demolition works successfully progressing. The project will consist of a 35 level, A-grade office tower, basement car parking, retail stores on ground level and a rooftop sky garden.

The development has been designed by Blight Rayner Architects and is to include a 5 Star Green Star design and as built rating, 5 Star NABERS energy base building rating and a WELL Core and Shell rating to optimise tenant health and wellness.

Charter Hall and Investa engaged RCP to provide project management and specialist programming services for the development.





Queensland Country Bank Stadium Townsville

The RCP North Queensland team were delighted to see the Queensland Country Bank Stadium come to life with the kick-off of the NRL season, Cowboys vs Broncos in March.

RCP was engaged on behalf of the Queensland Government in December 2016 to provide principal's audit programming services for the \$293.5m development.

The Queensland Country Bank Stadium incorporates state-of-the-art corporate facilities, permanent stands, permanent concessions and modern amenities throughout.

The stadium has the flexibility to host a range of events, such as concerts and community events, catering for up to 40,000 patrons in stands and on the field.

Haere-Roa UCSA Building, Christchurch, New Zealand

The University of Canterbury's bespoke IL3 student association facility accommodates a modern and adaptable space, comprised of the 11,000-person capacity Ngaio Marsh Performance Theatre, lecture facility, function centre, social and media rooms, club spaces, food and beverage offerings and the UCSA offices.

The surrounding building is landscaped and designed purposely with outdoor facilities to accommodate events and functions including external kitchen, staging area & amphitheatre.

The demolition and construction were delivered within a live student campus environment, with a new home now created for the University of Canterbury students.



AUSTRALIA

Website www.rcp.net.au
Email rcp@rcp.net.au

Adelaide Tel: +61 8 8205 7000
Brisbane Tel: +61 7 3003 4100
Melbourne Tel: +61 414 584 398
Sydney Tel: +61 2 8234 8000
Townsville Tel: +61 7 4721 0833

NEW ZEALAND

Website www.rcp.co.nz
Email rcp@rcp.co.nz

Auckland Tel: +64 9 379 9250
Christchurch Tel: +64 3 379 4701
Queenstown Tel: +64 3 550 0950
Tauranga Tel: +64 7 579 9250
Wellington Tel: +64 4 473 1850